



WIN*
RM 1,000!

Join our photo contest now!
*T&C Apply More info: suzuka.com.my/promotion

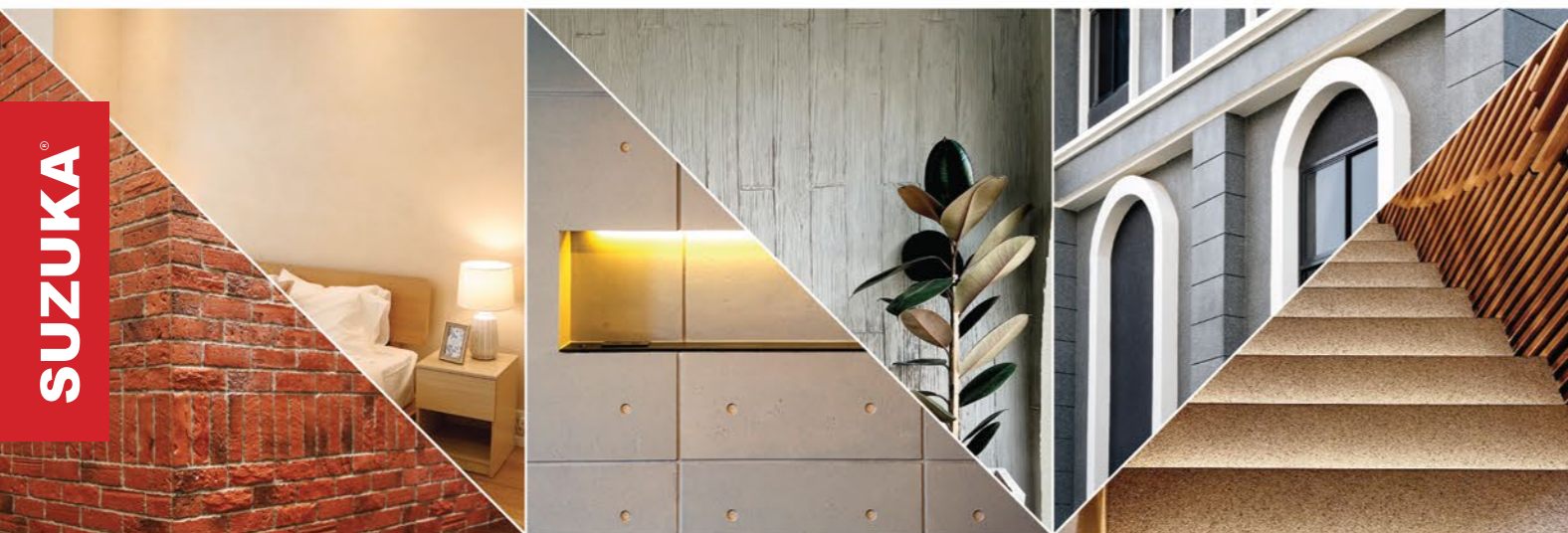


Strato.®

INTERIOR TEXTURED PAINT COLLECTION

WALL FINISH PROFESSIONALS

TAIWAN • MALAYSIA • THAILAND



BRICK & STONE VENEER • TEXTURED PAINT • KASTPANEL • ECES • TEXTURE COATING • PEBBLE STONE COATING



EDITION
6.1



suzuka.com.my

  [suzuka.group](https://www.facebook.com/suzuka.group) | Hotline : +6012-258 7388

* Photos of the products shown in this catalogue may vary in color due to lighting condition & printing. We suggest you examine actual product samples before ordering.



STRATO-E6.1-2306



Features

Crack Resistant



Low VOC & Odor



Formaldehyde & Lead Free



Green Choice, Water Based & Eco-friendly



Easy Application & DIY Friendly



Anti-chalking & Efflorescence



Applicable on Ceiling



Easy Maintenance



Easy to Touch Up



Matte Finishing



Strato® CEMENT TEXTURE

Create everlasting look with Strato® Cement Texture. Whether you are going for the industrial, scandinavian, contemporary or minimalistic style, the backdrop of the cement texture can complete the look.

• **INTERIOR USE ONLY**
For exterior options,
please see **MONOKRETE**.



SCT-301

SILVER
GREY



Silver Grey | **SCT-301**



Natural Grey | **SCT-302**



Shark Grey | **SCT-303**



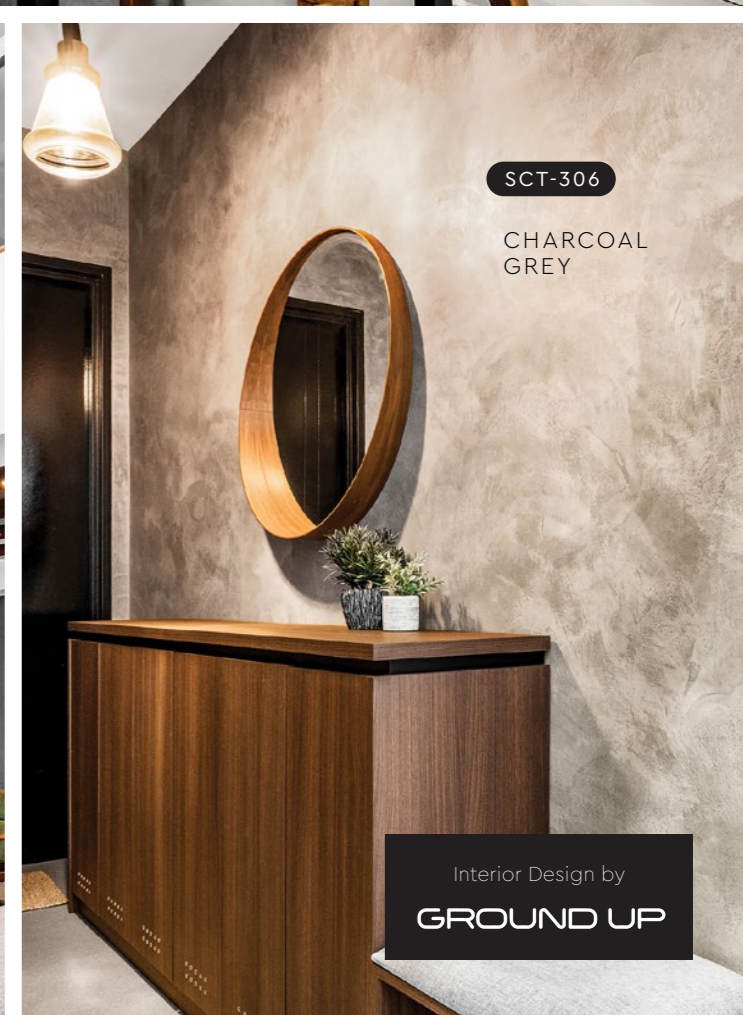
SCT-304

GRANITE
GREY



SCT-304

GRANITE
GREY



SCT-306

CHARCOAL
GREY

Interior Design by
GROUND UP



SCT-308

SHADOW
GREY



Granite Grey | **SCT-304**



SCT-304

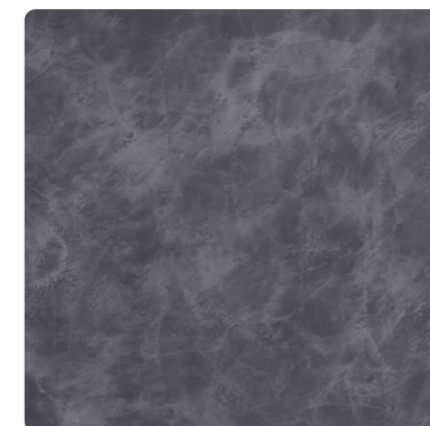
GRANITE
GREY



Iron Grey | **SCT-305**



Charcoal Grey | **SCT-306**



Metal Grey | **SCT-307**

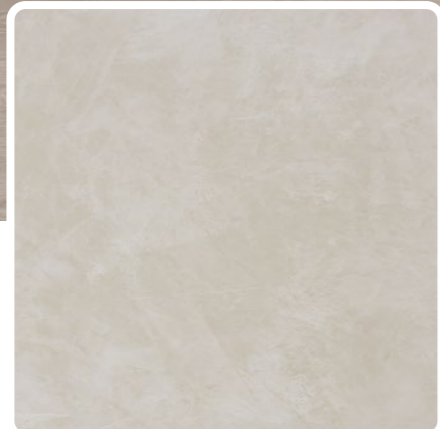


Shadow Grey | **SCT-308**



SCT-309

ASHES
GREY



Ashes Grey | **SCT-309**



Misty Grey | **SCT-310**



SCT-309

ASHES
GREY

APPLICATION TECHNIQUE



APPLICATION VIDEO

Preparation: - Cover the edges of surface that won't be painted by masking it with tape, paper or plastic.
- Clean up the wall surface to ensure it is free from dirt and dust.



1 PRIMER

Roll 2 layers of primer on the entire surface.
Allow 30 minutes to dry between the layers.
(The primer can be diluted with maximum 5% of clean water)

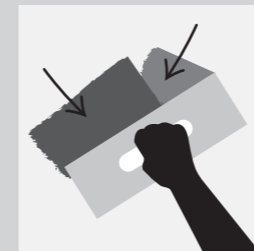
Tool: Roller



2 SANDING

Sand the entire surface in circular motion to ensure the surface is smooth.

Tool: 600 Grit Sand Paper



3 TEXTURE COAT

Scrape texture coat randomly to create pattern. Ensure the whole surface area is covered. Then apply second layer.

Tool: Stainless Steel Trowel

(use a larger trowel for a larger pattern, a smaller trowel for smaller pattern)



4 SANDING (OPTIONAL)

Sand the entire surface in circular motion to enhance the pattern.

Tool: 600 Grit Sand Paper



5 TOPCOAT

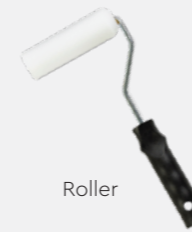
Apply SR-Top 1 on entire surface using a dry sponge in circular motions.

IMPORTANT: Use a clean and dry sponge or cleaning cloth to wipe the excess topcoat before it dries to avoid the sponge marks.

Tool: Sponge / Cleaning Cloth

IMPORTANT: Color may vary on application technique & amount of material used.

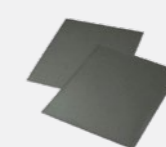
Tools:



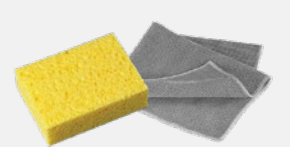
Roller



Trowel / Scrapper



Sand Paper (600 Grit)



Sponge / Cleaning Cloth

PACKING DATA

| | |
|-------|--------------------|
| 1 L | Primer |
| 1 L | Texture Coat |
| 0.5 L | Topcoat (SR-Top 1) |

Coverage (per set)

| | |
|---------|-----------|
| WALL | 6 - 7 sqm |
| CEILING | 5 - 6 sqm |



Strato.[®] VELOURS

Rich velvety layers of color to enhance the interior space.
Each color brings out a different mood & ambience,
find a color that matches your personality.



Features

Crack Resistant



Low VOC & Odor



Formaldehyde & Lead Free



Green Choice, Water Based & Eco-friendly



Easy Application & DIY Friendly



Anti-chalking & Efflorescence



Applicable on Ceiling



Easy Maintenance



Easy to Touch Up



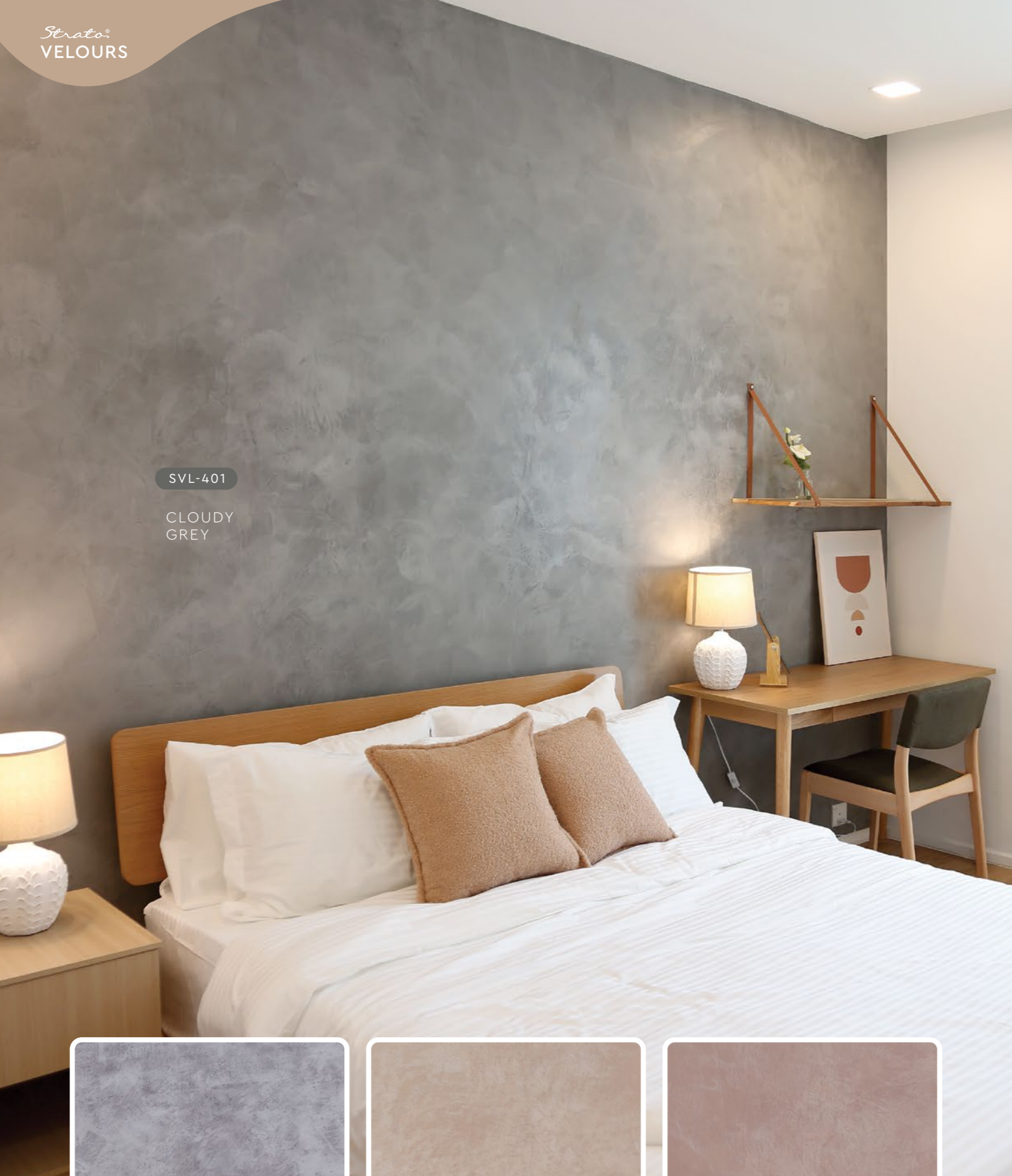
Matte Finishing



• **INTERIOR USE ONLY**
For exterior options, please see **MONOKRETE**.

SVL-401

CLOUDY
GREY



Cloudy Grey | **SVL-401**



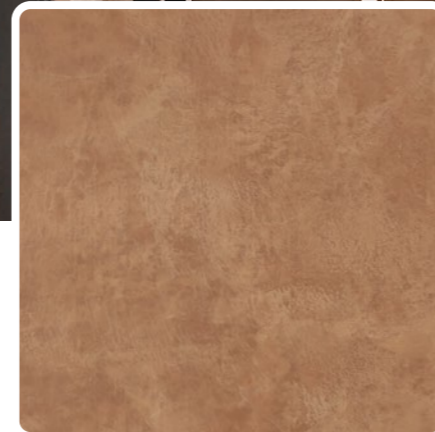
Mushroom Beige | **SVL-402**



Hazel Wood | **SVL-403**

SVL-404

SUMMER
SAHARA



Summer Sahara | **SVL-404**



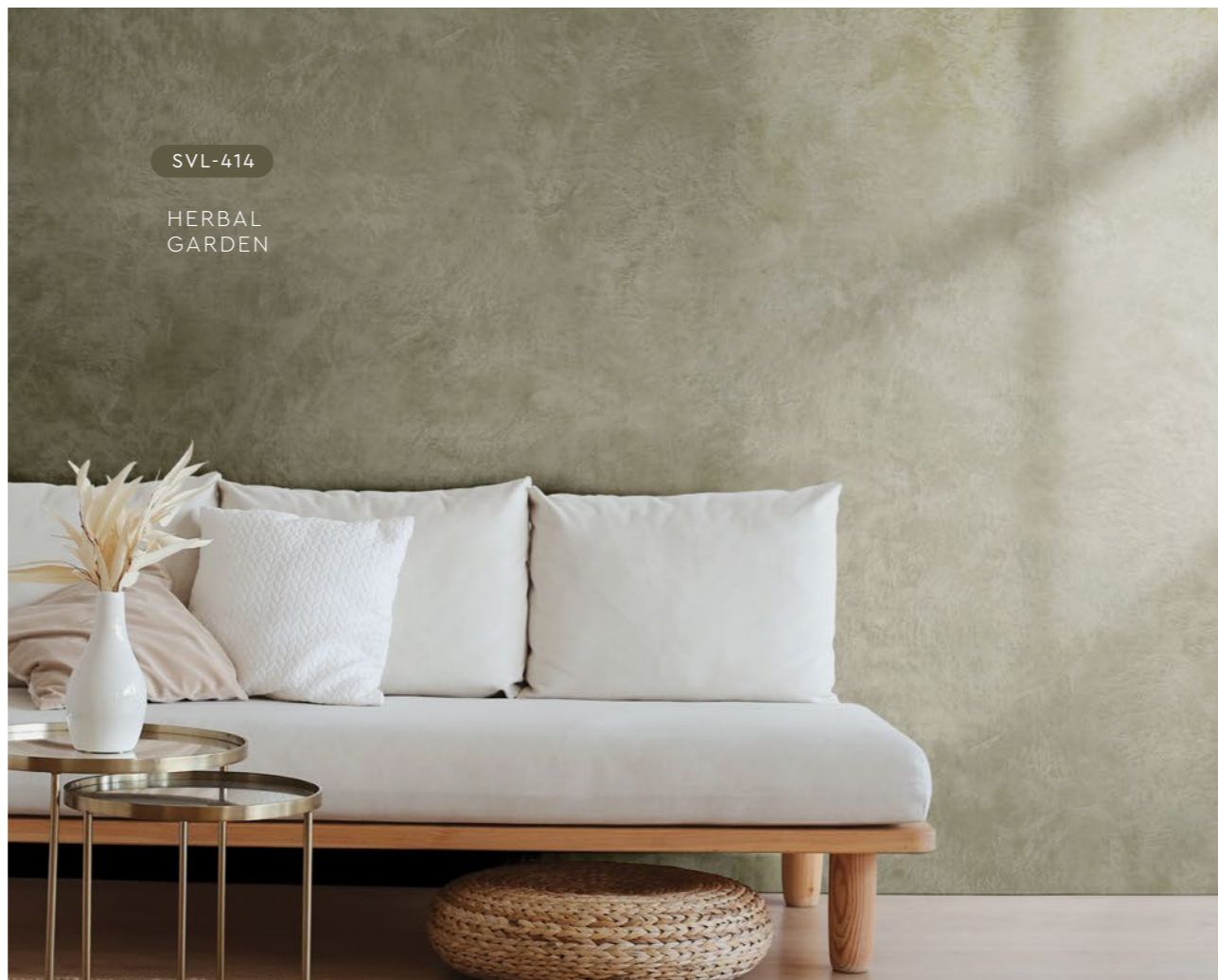
Walnut Leather | **SVL-405**

SVL-405

WALNUT
LEATHER



Brocade Blue | **SVL-406**



Frosted Mint | **SVL-411**



Vivid Emerald | **SVL-412**



Hunter Green | **SVL-413**



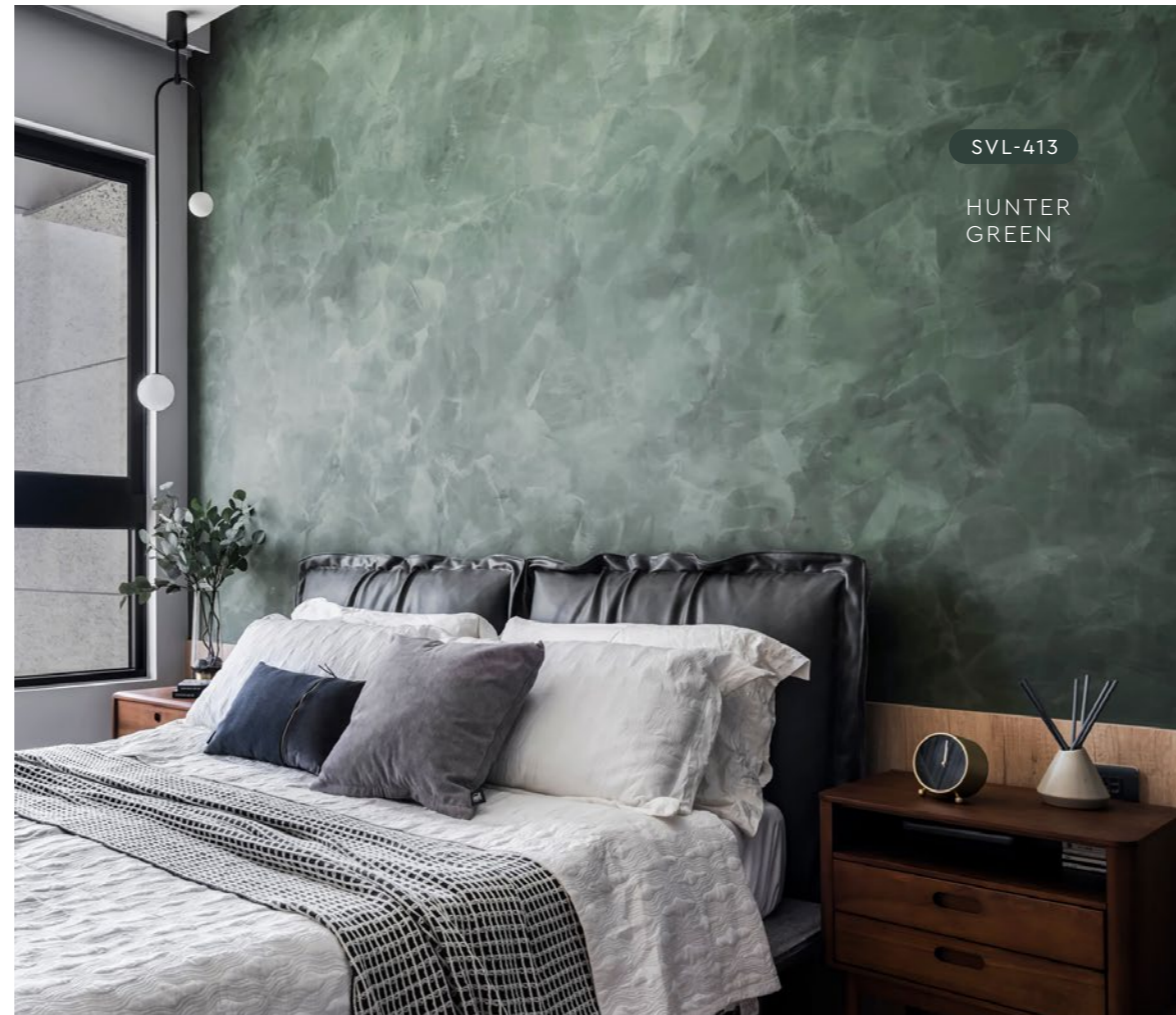
Herbal Garden | **SVL-414**



Deep Marine | **SVL-407**



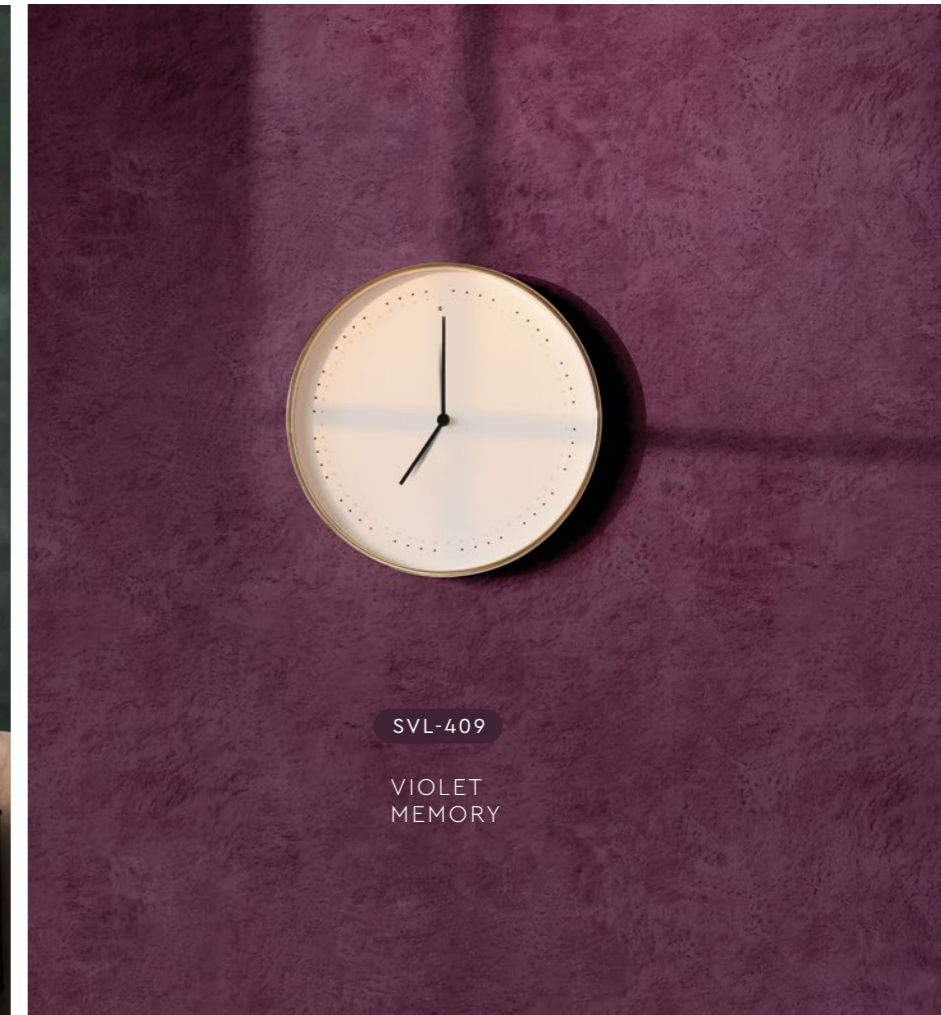
Royal Denim | **SVL-408**



Violet Memory | **SVL-409**



Rosy Mauve | **SVL-410**



SVL-417

VANILLA
CREAM



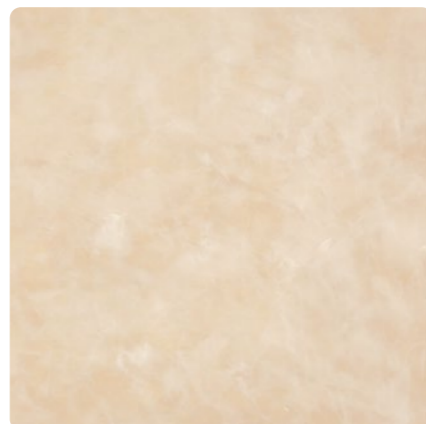
Lime Mist | **SVL-415**



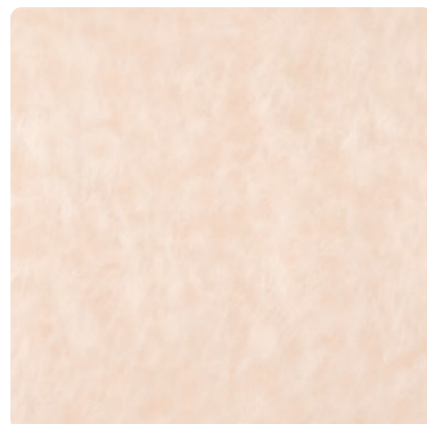
Flamingo Blush | **SVL-416**



Vanilla Cream | **SVL-417**



Oat Beige | **SVL-418**



Blush Cream | **SVL-419**

APPLICATION TECHNIQUE



APPLICATION VIDEO

Preparation: - Cover the edges of surface that won't be painted by masking it with tape, paper or plastic.
- Clean up the wall surface to ensure it is free from dirt and dust.



1 PRIMER

Roll 2 layers of primer on the entire surface. Allow 30 minutes to dry between the layers.
(The primer can be diluted with maximum 5% of clean water)

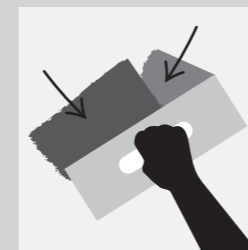
Tool: Roller



2 SANDING

Sand the entire surface in circular motion to ensure the surface is smooth.

Tool: 600 Grit Sand Paper



3 TEXTURE COAT

Scrape texture coat randomly to create pattern. Ensure the whole surface area is covered. Then apply second layer.

Tool: Stainless Steel Trowel

(use a larger trowel for a larger pattern, a smaller trowel for smaller pattern)



4 SANDING (OPTIONAL)

Sand the entire surface in circular motion to enhance the pattern.

Tool: 600 Grit Sand Paper



5 TOPCOAT

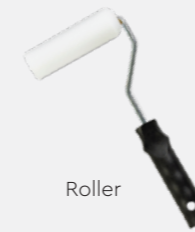
Apply SR-Top 1 on entire surface using a dry sponge in circular motions.

IMPORTANT: Use a clean and dry sponge or cleaning cloth to wipe the excess topcoat before it dries to avoid the sponge marks.

Tool: Sponge / Cleaning Cloth

IMPORTANT: Color may vary on application technique & amount of material used.

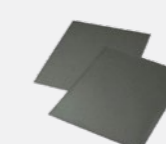
Tools:



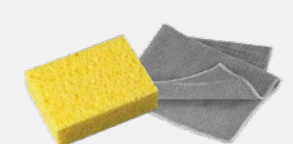
Roller



Trowel / Scrapper



Sand Paper (600 Grit)



Sponge / Cleaning Cloth

PACKING DATA

| | |
|-------|--------------------|
| 1 L | Primer |
| 1 L | Texture Coat |
| 0.5 L | Topcoat (SR-Top 1) |

Coverage (per set)

| | |
|---------|-----------|
| WALL | 6 - 7 sqm |
| CEILING | 5 - 6 sqm |



Strato® cashmere

Strato® Cashmere embodies the pinnacle of elegance in textured coating. Achieved through smooth layering and delicate craftsmanship, the finished product gives a refined and royal appearance with a lingering hint of sophistication.

• INTERIOR USE ONLY

Features

Low VOC & Odor



Formaldehyde & Lead Free



Green Choice, Water Based & Eco-friendly



Easy, Quick Application & DIY Friendly



Easy Maintenance





SCH-003

SILVER
SLATE



SCH-016

STARDUST
SILVER

Interior Design by
METRICS
GLOBAL



SCH-008

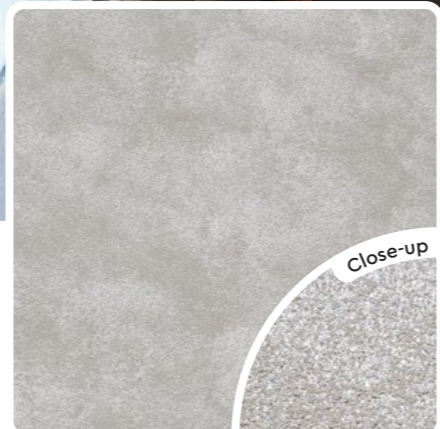
EGGSHELL
BEIGE



Pearl White | **SCH-001**



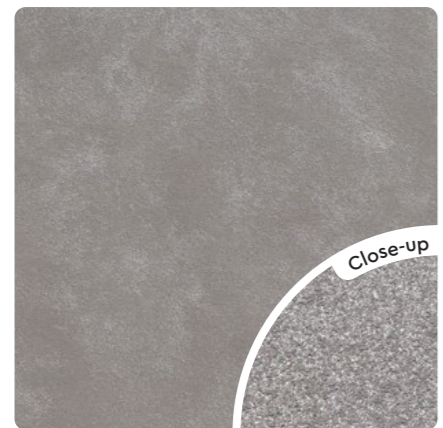
Silver Mist | **SCH-002**



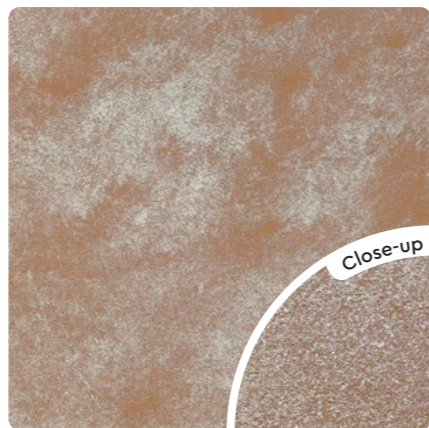
Silver Slate | **SCH-003**



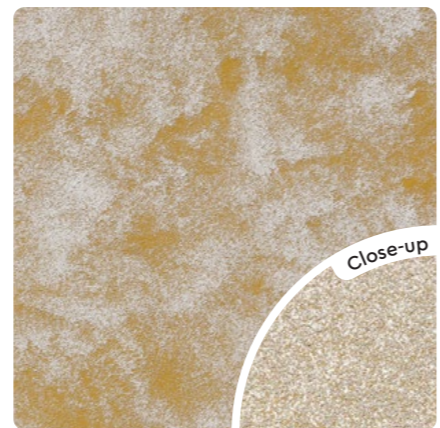
Autumn Beige | **SCH-007**



Platinum Metal | **SCH-004**



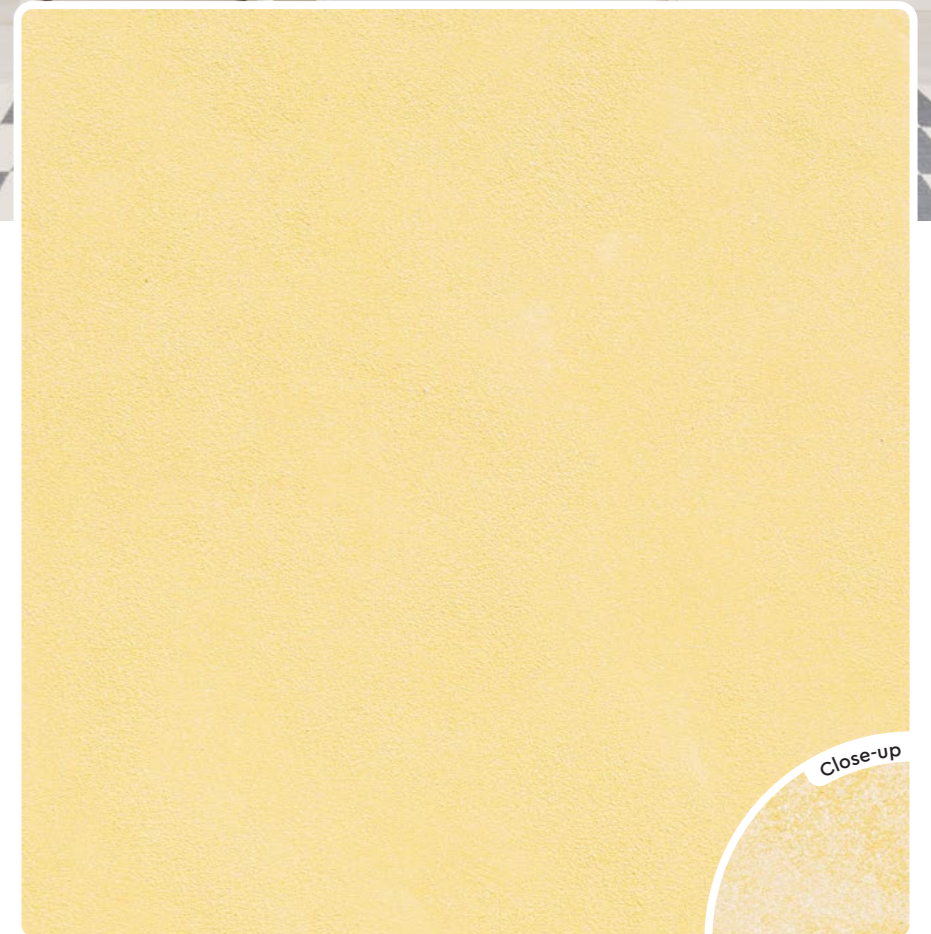
Bronze Age | **SCH-005**



Sand Castle Beige | **SCH-006**



Eggshell Beige | **SCH-008**



Desert Gold | **SCH-009**

SCH-015

POWDER
BLUE



Baby Doll Pink | SCH-013



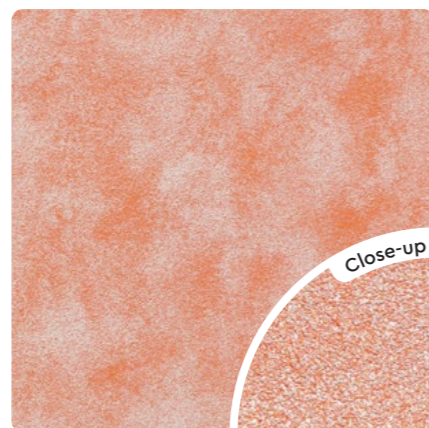
Coral Blush | SCH-014



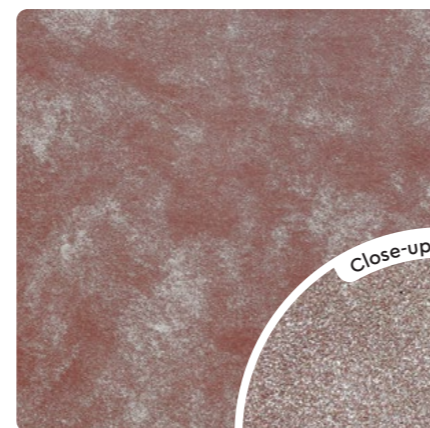
Powder Blue | SCH-015



Honey Yellow | SCH-010



Peach Blossom | SCH-011



Plum Sunset | SCH-012

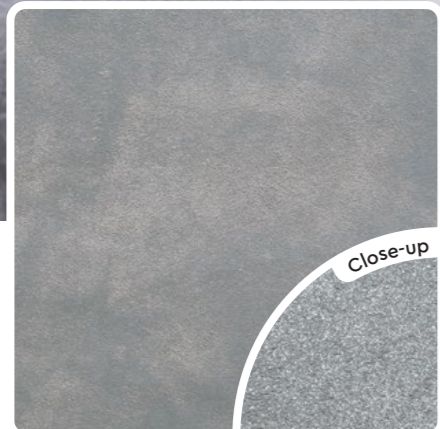


SCH-014

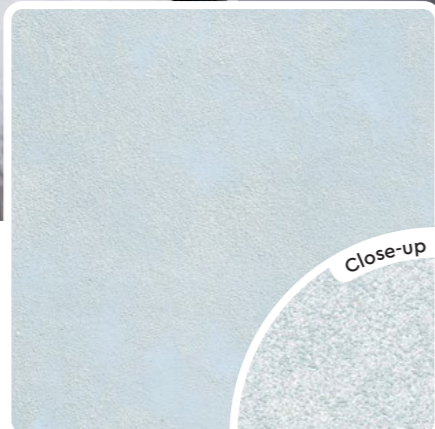
CORAL
BLUSH

SCH-019

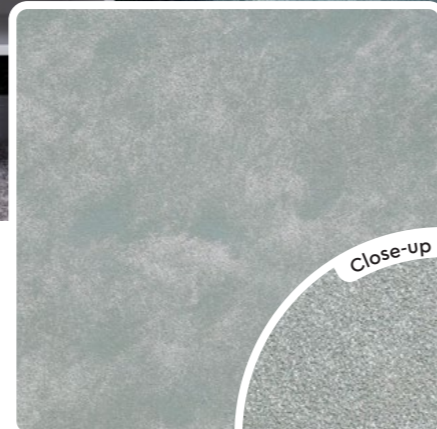
PEACOCK
BLUE



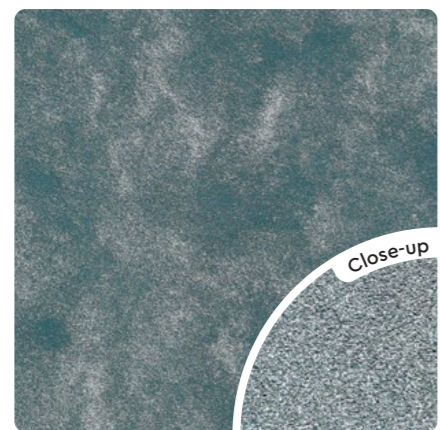
Stardust Silver | SCH-016



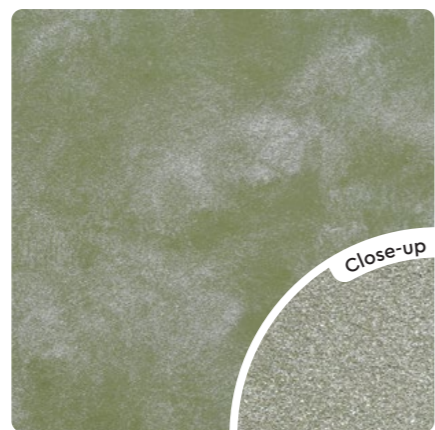
Lace Blue | SCH-017



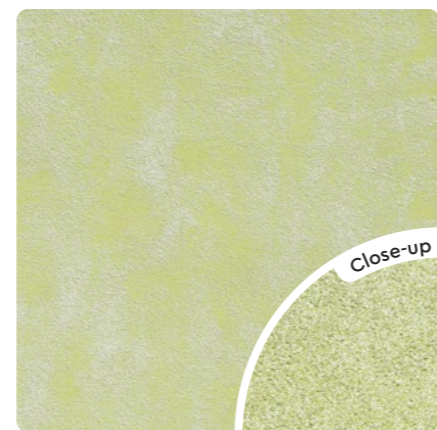
Ash Grey | SCH-018



Peacock Blue | SCH-019



Olive Tree | SCH-020



Tropical Green | SCH-021

APPLICATION TECHNIQUE



APPLICATION VIDEO

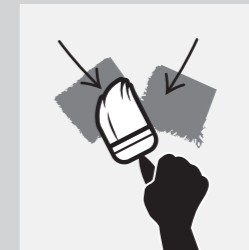
Preparation: - Cover the edges of surface that won't be painted by masking it with tape, paper or plastic.
- Clean up the wall surface to ensure it is free from dirt and dust.



1 PRIMER

Roll 2 layers of primer on the entire surface. Allow 30 minutes to dry between the layers.
(The primer can be diluted with maximum 5% of clean water)

Tool: Roller



2 TEXTURE COAT

Brush on texture coat in criss cross patterns. Apply 1-2 layers. Ensure the whole surface area is covered.

Tool: Brush



3 FLATTENING

Flatten the entire surface in circular motion to enhance the pattern.

Tool: Plastic Scrapper

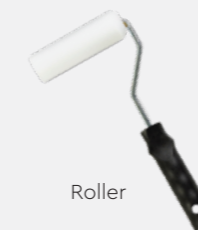


4 TOPCOAT

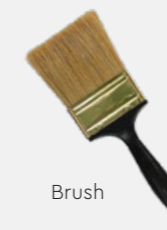
Evenly roll SR-Top 3 on entire surface. Allow to dry for 1 hour.

Tool: Roller

Tools:



Roller



Brush



Plastic Scrapper



PACKING DATA

| 1 L | | Primer | Coverage (per set) | |
|-----|--------------------|--------|--------------------|-----------|
| 1 L | Texture Coat | | WALL | 6 - 7 sqm |
| 1 L | Topcoat (SR-Top 3) | | CEILING | 5 - 6 sqm |

Strato® taffeta

A vibrant color layered in texture and dusted with a shimmering pearl effect crafts a bold and radiant feel onto the wall.



• INTERIOR ONLY

Features

Low VOC & Odor



Formaldehyde & Lead Free



Green Choice, Water Based & Eco-friendly



Easy, Quick Application & DIY Friendly



Easy Maintenance



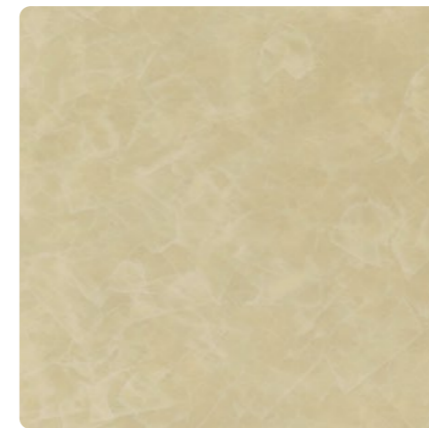


SRT-219

OYSTER
BEIGE



Light Sapphire | **SRT-214**



Oyster Beige | **SRT-219**



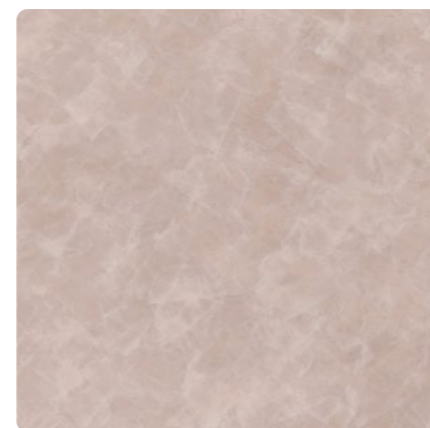
Blue Waves | **SRT-225**



Pewter Grey | **SRT-201**



Light Steel Blue | **SRT-203**



Light Sepia | **SRT-209**



SRT-201

PEWTER
GREY



SRT-214

LIGHT
SAPPHIRE

SRT-232

PALE
LAVENDER



APPLICATION TECHNIQUE



APPLICATION VIDEO

Preparation: - Cover the edges of surface that won't be painted by masking it with tape, paper or plastic.
- Clean up the wall surface to ensure it is free from dirt and dust.



1 PRIMER

Roll 2 layers of primer on the entire surface. Allow 30 minutes to dry between the layers.
(The primer can be diluted with maximum 5% of clean water)

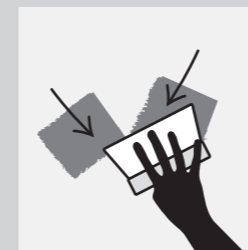
Tool: Roller



2 SANDING (OPTIONAL)

Sand the entire surface in circular motion to ensure the surface is smooth.

Tool: 600 Grit Sand Paper



3 TEXTURE COAT

Scrape texture coat in a random criss cross pattern. 2-3 layers. Every layer requires 30 minutes to dry.

Tool: Steel Scrapper



4 SANDING

Sand the entire surface in circular motion to enhance the pattern.

Tool: 600 Grit Sand Paper



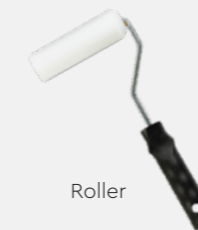
5 TOPCOAT

Scrape on topcoat SR-Top 2 in a random criss cross overlapping patterns. Allow 1 hour to dry.

Tool: Steel Scrapper

✦✦ Taffeta has a **shimmering** pearl effect topcoat.
✦✦ For a **matte** finishing, please request **SR-Top 1**.

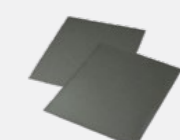
Tools:



Roller



Steel Scrapper



Sand Paper (600 Grit)



Malted Mocha | **SRT-231**



Pale Lavender | **SRT-232**



Ocean Surface | **SRT-233**

PACKING DATA

| | |
|-------|--------------------|
| 1 L | Primer |
| 1 L | Texture Coat |
| 0.5 L | Topcoat (SR-Top 2) |

Coverage (per set)

| | |
|---------|---------|
| WALL | 4.5 sqm |
| CEILING | 3.5 sqm |

